

EUREKA EXPRESS

VOL XXXI No. 10 CIRC 286

NOVEMBER/DECEMBER 2010



In Loving Memory of

LILA DUNCAN

2 Dec 1925 – 28 Nov 2010

PATRON EUREKA EXPRESS

A TRIBUTE TO LILA DUNCAN

2 DECEMBER 1925 – 28 NOVEMBER 2010

To all of Lila's family goes the deepest sympathy of all past and present Eureka residents in their sad loss of their dearest mother, mother-in-law, grandmother and great grandmother.

Lila (nee Magon) married local farmer Maurice Duncan in 1947 and a true partnership was born. At first Lila and Maurice lived in a small ex-Army Government cottage (now still to be seen at the corner – ex Eureka Transport – now Stewart's property) until their present home on the farm was completed in 1949. They made all the moulded concrete blocks themselves and gradually bought the Totara and Rimu timber in small lots as available post-war.



Lila and Maurice's six children, Heather, John, Lynn, Colin, Raewyn and Graeme all followed in their father's footsteps attending the local Eureka School. Always community-spirited Lila was a dependable back up for Maurice during his record 14 years on the School Committee. Lila's contact with the school was kept up right through until its closure in 2003 through their grandchildren, Lila proudly and loyally in the support role at sports days, calf clubs and other functions.

The Hall Committee saw both Maurice and Lila actively serving right up until their deaths. Maurice for 50 years and Lila for 29 years, three of which she served as Chairperson. Their shared love of dancing, right back to pre-marriage days, saw them enjoying the district's annual Balls and Cabarets and also regularly attending Old Time Dancing evenings in later years.



Farming was Maurice's lifelong passion and vocation combined with his love of tractors and machinery which saw him actively involved in contracting for 50 years. This would not have been possible without Lila's hard work behind the scenes, milking the cows, running errands and meals, answering the phone, doing the accounts and generally keeping things on track. (Colin has also hugely benefited from his Mum's input in his years in business with her errand running, the banking run, and regular home cooked meals).



Through the years Lila was also very involved in the Ladies Guild, Ladies Social Club, local cards evenings and Ladies Badminton.

In 1983 Lila began what was to be 28 dedicated years on the Eureka Express Committee. As well, in 1998, following Maurice's death, Lila accepted the position of Patron. Her considerable input, reliable attendance at meetings and printing days, (she did her delivery run right up to last month) and her friendly, cheerful company will be sorely and sadly missed by all committee members.

Lila was a doer as well as a joiner. When a skiing accident in 1990 curtailed her badminton she took up line dancing and enjoyed that for a number of years. With six of a family, 16 grandchildren and numerous great grandchildren coming along, Lila's home was always open and welcoming and busy. She was a great cook, seamstress and gardener and was always the one to volunteer when an occasion needed a special cake baked and iced - A true homemaker.

A few years before Maurice died he was persuaded to take Lila cruising and do a bit of travelling. They enjoyed this and Lila had continued to travel with friends and/or family until very recently.

Losing John very suddenly five years ago was a great blow but Lila soldiered on with her large extended family and voluntary interests, including regularly working for Save the Children, and knitting for prem. babies at the hospital, to keep her busy. Always outgoing and 'up to the minute' Lila followed the netball with a passion, both the Silver Ferns and the Magic and enjoyed shows, concerts and movies.



Lila's passing is a huge loss to her close and loving family but also leaves a big hole in our community - rather like the end of an era.

She was a very special lady, highly respected, esteemed and loved by all who knew her during her 63 years as a fully contributing member of the Eureka community.

It was a real pleasure and privilege to know, work and play alongside Lila. Her memory we will cherish.

SEASONS GREETINGS

THE EUREKA EXPRESS EDITOR AND COMMITTEE
WISH ALL READERS A VERY MERRY CHRISTMAS
AND A SAFE AND HAPPY NEW YEAR.



Guest Editorial

Last weekend my wife and I had the pleasure of attending the final two days of the World Rowing Championships at Lake Karapiro.

I could not come away from that event without the feeling of how proud I was to be a New Zealander. Here we were blessed with magnificent weather, magic scenery and surroundings, an attendance figure that has never been bettered at any previous World Championship, impeccable organization, plus we came third on the medal table. In other words when you consider the size of our population compared to the rest of the world we have a consistent record of "punching well above our weight" in the sporting arena. Countries that beat us have populations in excess of 80 million compared to our approximate 4.5 million.

More recently we have come away with gold medals in team sports at the Commonwealth games such as Rugby and Netball at the expense of Australia and while I write this editorial Australia were last night beaten again by New Zealand in Rugby league for the Four Nations Title which also hold the World Cup. Once again we seem to be "punching well above our weight".

Our dairy farmers who consistently overall increase production year in and year out, are the biggest exporters of dairy products in the world and make up 26% of our export income. Again for a small economy we are "punching well above our weight".

The success list goes on, so why in New Zealand do we get all the "knockers" who decry success instead of applauding it. Most western world countries would love to have our track record of success. If a lot of New Zealanders had their way we would have a nation where mediocrity is accepted as the norm. I think aspects of the education system have done that. Most people in their lives and jobs aim for betterment and try to improve. We should not have to be embarrassed at "punching above our weight". In farming we now have new barriers to overcome and I am sure that we are resilient enough to do that, so why the protestors at the World Dairy Summit in Auckland this week? Do they not want us to continue to succeed?

Bring on the Rugby World Cup 2011.
Brian Willis



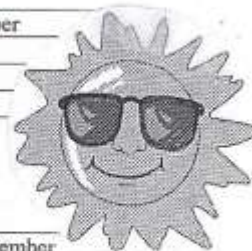
RAINFALL

	October 2010	Year to 31 st October
Total (mm)	36.5	1116
Average (1994-2010)	95	999
Difference	-58.5	+117

Rainfall recorded on 12 days.

	November 2010	Year to 30 th November
Total (mm)	19	1135
Average (1994-2010)	72.5	1072
Difference	-53.5	+63

Rainfall recorded on 4 days.



SNIPPETS



BIRTHS – NEW BABY CONGRATULATIONS TO:

- **Brad van Hellemond and Crystal Duggan** of Waverley Road (sharemilking on Mace's farm) who welcomed a bonny **baby boy, Henry** on November 12. A lovely **brother for sister Billie**. Best wishes to all.
- And **Zane and Caroline Williams** of Eureka Road welcomed a darling **baby girl, Samantha**, on September 19. A lovely **sister for Joshua**. Best wishes to all.



WELCOME TO EUREKA MOTORS to **Patsy Booth** of Eureka Road who is Colin's new office and shop assistant. Helping out temporarily and just part time is another local lady, **Crystal Cooper**. Hi to you both

BURGLARIES!! Do beware! Lock up your farm bikes, sheds, houses and be vigilant---

Thieves are out and active in our community

Condolences are extended to Peter and Sharlene Litt and young Kane on the death of Peter's granddad and Kane's great granddad, Mr Tom Litt of Morrinsville, on November 19.

ALL THE FUN OF THE FAIR



Do mark **Saturday 26th March 2011** on your new calendars.

This is the day the Giant Pumpkins will be displayed and weighed and judged at the Eureka Hall.

A Country Fair type day is envisaged with fun competitions, food, produce stalls, plants etc.

Watch your February **Express** for details. If you have any ideas or want to be involved please phone Gayle 824 1713 or Gail 824 1758

EUREKA EXPRESS

ADVERTISING RATES		CONTACTS – Gail or Gayle	
<i>Classified Advertisements</i>	<i>Free</i>	<i>Gail Mayall (Editor)</i>	<i>Gayle Orr (Treasurer)</i>
<i>Small Business Advertisements</i>	<i>\$10 / month</i>	<i>70 Eureka Road</i>	<i>1139 SH26</i>
• <i>x 10 Insertions</i>	<i>\$80 / year</i>	<i>Ph 8241 758</i>	<i>R D 6, HAMILTON 3286</i>
<i>One Third Page Advertisement</i>	<i>\$15 / month</i>	<i>Fax 8241 028</i>	<i>Ph 8241 713</i>
• <i>x 10 Insertions</i>	<i>\$120 / year</i>	<i>e-mail:</i>	<i>Fax –</i>
<i>One Half Page Advertisement</i>	<i>\$20 / month</i>	<i>editor@eurekaexpress.co.nz</i>	<i>e-mail: sorr@tra.co.nz</i>
• <i>x 10 Insertions</i>	<i>\$160 / year</i>	<i>gailandharry@slingshot.co.nz</i>	

MARKET PLACE



For Sale

- Rimu China Cabinet \$250 ono

Please phone Stephanie Timms 856 0844 (work) or 027 663 8862

For Sale

- Office table 28" x 48" (71cm x 122 cm) and swivel office chair. As new. \$50 for pair.
- Also nice glass topped coffee table. Offers.

Please phone Gail 8241 758.

Pet Feeder Required

We require a person (anyone over the age of 15) to come to our house to feed all our pets while we are on holiday over the New Year period. If interested please phone Becky Walling 824 0894 or 0274 934476

AVON

I have a range of products in stock for all your last minute Christmas gifts (perfume, makeup, jewellery etc) and Summer Holiday essentials (sunscreen, deodorant, body lotion & show gels). Quality products, great prices. 100% satisfaction guaranteed. Gift wrapping available.
Phone Ros 824 1611



ZUMBA IS NOW HERE IN YOUR AREA!!

Zumba uses Latin inspired international music and easy to follow dance steps to create a dynamic, exiting and effective fitness programme that will blow you away. Calorie burning

and body energising, while contagiously fun. You will "get a work out" and "love working out" - "ditch the routine and join the party".

Zumba is designed for everyone, every shape, age and fitness level. From the "dance-phobic" to the "dance expert" Zumba is for you.

TAUWHARE HALL Thursday Evenings: 7.30pm – 8.30pm

Casual \$10 Senior Citizens/Students \$6, Concession Tickets: \$120 = 20 classes, \$70 = 10 classes

Join in any time; just come along to a class. Zumba is great for the mind, body and soul.

Megan Hyland (Zumba Morrinsville) is a Certified Zumba Fitness Instructor,

Contact: (021) 905335, megan.zumba@xtra.co.nz

SCHOOL TERM DATES 2011

Differences for 2011:

The usual length of each school term has been adjusted for 2011. Terms 1 and 2 are slightly longer than usual, and Term 4 is two weeks shorter. This adjustment has been made to align the October term holiday with the final stages of the 2011 Rugby World Cup tournament.

Primary and Intermediate Schools

Term	Start Date	End Date
1	Between Monday 31 January (at the earliest) and Monday 7 February (at the latest).	Friday 15 April (100 to 110 half days)
2	Monday 2 May	Friday 15 July (108 half days)
3	Monday 1 August	Friday 7 October (100 half days)
4	Tuesday 25 October	No later than Tuesday 20 December (82 half days) *

* Or to a day in December which ensures that the school has been open for instruction for **390 half days** in 2011

Secondary and Composite Schools

Term	Start Date	End Date
1	Between Monday 31 January (at the earliest) and Monday 7 February (at the latest).	Friday 15 April (100 to 110 half days)
2	Monday 2 May	Friday 15 July (108 half days)
3	Monday 1 August	Friday 7 October (100 half days)
4	Tuesday 25 October	No later than Tuesday 13 December (72 half days) *

* Or to a day in December that ensures that the school has been open for instruction for **380 half days** in 2011.

Public Holidays for 2011

Auckland Anniversary	Monday 31 January
Waitangi Day	Sunday 6 February
Good Friday	22 April
Easter Monday)	
Anzac Day)	25 April
Queen's Birthday	Monday 6 June
Labour Day	Monday 24 October

Tauwhare School

0077 Heretape 1207 New Zealand
www.tauwhareschool.co.nz
07 824 0054



I am frequently reminded of how lovely this school is. On Wednesday I came back to school to meet up with our Chairperson, Marc Vink, to discuss details for our new classroom and to check the swimming pool before heading off to a meeting at Newstead on our proposed new zone. The field was full of children of all ages who were obviously loving their athletics activities. Parents were having just as much fun it seemed! That same evening the Multi-Purpose Room was full of parents dancing away to Zumba!

CAMP RAGLAN

Year 5 & 6 pupils arrived back at school on Friday 5th November exhausted but full of enjoyment, they had had a wonderful week at Camp Raglan.

We began each meal with a song praising God and Jesus and thanking them for our delicious food and a great day.

The Burma Trail was a scary, terrifying night time experience following a rope through the bush in the dark with no torches to be terrified by adults and other children hiding on the trail.

We would like to thank Mr Uivel and the Hillcrest High School year 12 students for the Kayaking and Raft building day which was well-organised. Everybody persevered to complete the task of kayaking against the current in the estuary and also to transport the weta, the tuatara, the rat and two DOC rangers across the river without them eating each other.

The Amazing Race was full of obstacles and activities including Fear Factor Food challenge, Low Ropes challenge, Archery, Confidence Course, Tangrams and a River Crossing Challenge.

The Team Building Course activities meant we had to trust our team mates and work together as a team to complete each obstacle.

We spent the afternoon at the beach building a sand castle which had to have a golf ball rolled from top to bottom in the slowest time and the castle had to be built to beat the incoming tide.

On the last afternoon we played a Wheel 'n' Deal game in which we had to use our negotiating skills to trade and complete our first aid survival kit.

We finished our camp week with a visit to Waingarō Hot Springs with the longest outdoor slide in New Zealand and relaxed our tired muscles in the hot water.

CAMP EVENING

Tuesday 30 November at 7 pm Sausage sizzle and presentation by Year 5 & 6 sharing their Camp Raglan experience. All parents welcome Year 3 & 4 parents come along and see what your child might be doing in two years time.

TAUWHARE SCHOOL SPEECH CONTEST

On Friday morning we held the finals of our annual speech competition. The standard among the nine finalists was extremely high and made our judge's decision very difficult. Congratulations to Kiri Hinton, who won with her entertaining and informative speech on "Hairstyles" – I may never colour my hair again after hearing this! Congratulations to Tori Gilroy who came second with

her speech on "Learning" and to Brianna Uivel, who spoke on "Gypsy her dog" and Liam Gilroy for his speech on "Sayings" who were awarded third equal.

You will have a chance to hear these wonderful speeches at the end of the year break up. Kiri and Tori will represent our school at the Country Schools Cluster Speech contest held here at 4 pm on Thursday and again at the Rotary Competition in Cambridge on Friday 3rd December.

END OF YEAR CONCERT

On December 9th we are having our first ever concert to show case the talents of our children. So many of our students learn an instrument, dance or sing and this will be an opportunity for us all to watch them perform. We will be involving all of the children in our school as we will be singing songs we have learned throughout the year and the Year 5 & 6 children will be playing recorder and glockenspiel.

We will hold the concert at the Tauwhare Hall and start the evening at 7 pm. Pop this date on your calendars!

DATES FOR YOUR DIARY

December 9th	School Concert, Tauwhare Hall
December 14th	End of Year Prize giving, Tauwhare Hall
December 16th	12 noon End of Term
February 2nd 2011	Term Starts



LADIES A PLATE

The things we love most about Christmas time, the things we reminisce about, the things that move us, and give us Goosebumps, and warm our hearts, are not things that are available gift wrapped at the malls. They are more intangible and mystical and while it may sound corny and trite, Christmas is nothing without the people we love.

Pecan Tartlets

These little tartlets are a good alternative to mince pies during the festive season Or just keep them in a tin for when you fancy a little something scrumptious to get you through the afternoon. Pre heat oven to 200°C Makes 36 mini tartlets

1 quantity sweet short crust pastry - see recipe below

Filling

75g butter melted	1 egg
1 tsp vanilla	1 cup brown sugar
1 cup pecan nuts	

Line mini muffin pans with pastry circles. In a small saucepan melt together the butter, brown sugar, and vanilla. Allow the filling to cool slightly before whisking in the egg. Place spoonfuls of filling in cases and decorate with a pecan nut. Bake for 10 minutes or until cooked. Filling will bubble, remove from tins while hot and cool on a rack. Dust with icing sugar and serve with cream.

Sweet Short Crust Pastry

1 heaped cup of plain flour	1 dessertspoon sugar
Pinch of salt	1 egg yolk
100g butter cut into cubes	¼ of cold water

Put flour, and butter into food processor and pulse until fine crumbs form. Or place flour and butter in a bowl and rub in the butter with your fingertips. Add sugar, egg yolk, salt and water and pulse until just combined or if making by hand stir in the ingredients and water using a bread and butter knife until the pastry just holds together. Add more water if required to form the mixture into a soft dough. Mix or handle the pastry as little as possible. Wrap the pastry in paper or cling film and rest it in the fridge for half an hour before rolling out.

Christmas Mince Pies

For Christmas mince pies make the short crust pastry and line mini muffin pans with chilled pastry, fill with a teaspoon of fruit mince and top with a pastry star. Bake 10 -15 minutes at 180°C

Idea!

Pile a platter with a mixture of pecan tarts and mince pies, scatter over some halved strawberries, dust with icing sugar and scatter on a few Hershey's kisses, fantastic looking and tasting festive food to share.





Chocolate & Nut Edible Christmas Tree Centerpiece

Unlike many after dinner treats this mixture contains no alcohol so kids will really enjoy it too. You will need to make seven 5 pointed star outlines for this project.

Draw or print seven, 5 pointed stars, the largest will have a diameter of 16 cm. Each subsequent star will be 2 cm smaller than the last. 16cm, 14cm, 12cm

Cut out the stars, arrange them on a baking tray and cover them with non stick baking paper.

For the mixture

400 g good quality dark chocolate - I use Cadbury Belgian style for this recipe

125 g chunky sliced almonds

2/3 cup chopped dried apricots

2/3 cup sultanas

Bring a saucepan of water to the boil and place a heatproof bowl over the top. Turn off the heat and break the chocolate into the bowl. Stir it frequently but do not turn the heat back on! When melted stir in the other ingredients then fill the star outlines. The mixture is thick and chunky giving a prickly 3D effect. Reserve some of the chocolate mixture for sticking the stars together. When all the stars are formed, refrigerate the tray until they harden. To assemble, place a blob of reserved mixture into the middle of the 16 cm star and place the 14 cm star on top of it. Chill to harden the join then repeat the process until all the stars have been stacked on top of each other, chilling between each layer will ensure the tree sets straight. When hard dust with icing sugar and wrap in cellophane till required.



Sweetie Treatie Tree

Great for children to make.



You will need:

- A small terracotta pot
- A polystyrene ball
- A sturdy stick or piece of dowel
- Plaster of Paris
- Double sided sticky tape

Wrapped sweets and treats, chocolates, mini choc bars, Make up the plaster of Paris a little thicker than the packet directions; pour into the pot (you may need to plug up the drainage hole in the bottom of the pot). Insert the stick into the centre of the plaster and leave to set. When completely dry, whittle a hole into the polystyrene ball so that it fits snugly and securely onto the stick. Cut strips of double sided sticky tape and wrap all over the ball, press individually wrapped treats onto the ball until covered.

(can be reused each year replacing tape great with Easter treats as well)

Sharon Laurent

IN YOUR GARDEN

Hi fellow gardeners. I had made up my mind not to mention the weather, but having just come inside from turning one hose off and another on, I think you can draw your own conclusions. One tip worth mentioning is to use crystal rain in your pots and hanging baskets, particularly if you intend going away over the festive season.

The first flush of roses has been magnificent this spring, but now it's a constant chore to dead-head and prune. Cut the spent flower back to the third set of leaves or node. Give them a feed, spray and water when possible.

Sweet peas need to be picked constantly in order to keep them flowering, they also like a good watering. Remember clematis like their heads in the sun and their feet in the shade, it's a good idea to put mulch around the base of the plant and top it with a couple of bricks or some rocks.

Penstemons are considered to be the gift to creative gardeners. They are very colourful, hardy, flower for a long period, need no looking after and are a great ground filler. You can increase penstemons by cuttings. Take cuttings in early autumn, late March to April. Look for non-flowering shoot tips 10cm long and growths at the plants base. Remove at least half of the lower leaves, poke them into potting mix or compost, water until the soil is damp. Seal pots in a clear plastic bag and put in indirect sunlight, don't let them dry out. The ideal soil is fertile, but not too rich, with drainage.



Have you planted a swan plant yet? Who doesn't love monarch butterflies. Adding swan plants to your borders attracts monarch and their caterpillars to your garden, plus their seed pods look really interesting in autumn.

Go long: Longer grass keeps the roots much cooler. It's a good idea to raise the mower blades a notch. You'll create shade at the grass roots level and lessen the likelihood of having a dry parched lawn.

Spuds for Christmas! Sneak early potatoes from the sides of your plants. As soon as the potatoes start flowering you can start harvesting the first small but scrumptious tubers.

Feed fruiting plants now; tomatos, dwarf beans, capsicums, cucumbers and so on, they will all benefit from fortnightly liquid feeds.

Keep a watch out for those greebies, slugs, snails, aphids, white butterfly, mid brown chafer beetles with furry wing covers, they attack fruit trees.

January is the time to sit back and enjoy the fruits of your labours, with all the mouth watering berries available now and those fresh salad greens you planted earlier on.

Have a great holiday season and dream of the garden improvements you can do in 2011.

Have a Happy Christmas Jennifer



RHUBARB



Rhubarb has been used in Chinese medicine for thousands of years. It is a relative of the Dock and is a powerful disease fighter.

This sharp-tasting food contains anti-bacterial chemicals that help the body to fight infections. It is a good source of immune-supporting Vitamin C and contains compounds which help to prevent cancer. Rhubarb is high in dietary fibre. It is helpful for lowering cholesterol and preventing heart disease, and acts a natural laxative. Rhubarb also contains oxalic acid which is thought to aid the body to detoxify.

Rhubarb should be avoided by those prone to gout and arthritis, as oxalates can worsen these conditions.

Nutrients: Rhubarb contains Vitamin C, Folate, Calcium, Magnesium, Potassium, Fibre and Oxalic acid.

Rhubarb is lovely stewed and added to cereal for breakfast, or made in to a pie or crumble for dessert. I often combine apple and rhubarb, which makes for a milder taste.

Rhubarb is easy to grow—you only eat the stems as the leaves are highly poisonous and should never be eaten.



Cheryl McFarlane

WOODLANDS
HOMESTEAD, GARDENS & FUNCTION CENTRE



CHRISTMAS AT WOODLANDS

Homestead now decorated for Christmas.
Open daily for viewing from Monday 29th November to
Wednesday 5th January (except for Public Holidays)

One late night – Friday 10th December 4pm to 9pm.
Hot snacks and beverages available from café.
Featuring entertainment from *Woven Choir*



Tactics to manage dry conditions

As early dry weather continues in the region, DairyNZ is advising farmers to continue monitoring their pastures and make decisions on a week-by-week basis.

As the soil moisture deficit continues to decline, farmers should keep a close eye on the current pasture conditions. Make management decisions based on current (not expected) pasture covers.

According to NIWA data, much of the Waikato is currently approaching a soil moisture deficit of 75 percent – the usual level for February. Another 30mm of rain is required to bring soil moisture levels back to where pasture growth is not impacted.

Individual soil moisture deficit levels will depend on the type of soil being farmed. However, no matter what soil type, we are advising farmers to review things weekly and stick to the facts of current pasture cover, available supplements and cow condition."

Now could be the last chance to apply nitrogen to pasture, but only on areas of the farm where pasture is not showing the signs of moisture stress. Applying 40-50 kg/N/ha is profitable in these situations.

To establish if soil moisture levels are adequate, leave a saucer half-full of urea on a grassed area overnight – if most of it has dissolved by the morning, there is sufficient moisture to apply nitrogen.

In these situations, apply nitrogen in the evening before a heavy dew. Otherwise, wait and apply nitrogen before rain.

Managing feed supply through until autumn is also vital – as most farmers still have some surplus grass, Don't use all your supplement now. Use all available pasture first and use supplement to extend the round.

Continue achieving consistent grazing residuals of seven clicks (3.5cm) and maintaining 12-14kg DM of intake and cull low producers. Try and keep as many cows milking as possible.

Have a plan in place with key action decisions. To develop a summer management plan, and for more information on managing through dry conditions, visit dairynz.co.nz/drysummer

Late November/Early December summary:

- Apply 40-50 kg/N/ha to pastures that are not severely moisture stressed
- Only purchase and feed out supplement if you have grazing residuals below seven clicks (3.5cm) on the rising plate meter and low producers (passengers) have been culled.

Pasture Renewal Persistence Competition

The hunt is on for our best new pastures. Enter and you could win a \$1,800 travel voucher. Entries close Dec 15th. Refer the following web address for more details or obtain an entry form from DairyNZ.

<http://www.dairynz.co.nz/page/pageid/2145867713>

Phil Irvine
DairyNZ Consulting Officer
027 4839820



This time of the year there are a few diseases present that changes the behaviour of livestock big time. We'll discuss the most common diseases in this article:

Rye Grass Staggers

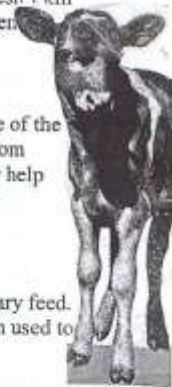
This disease is caused by a fungus that is actually living within the grass cells. This type of fungus is called an endophyte. The fungus produces toxins which protect the grass from Stem Weavils (a very useful trait), but also affect the animals which eat the grass (a not so useful trait). Affected animals show nervous symptoms such as staggering and falling over like they are drunk. It can also increase their body temperature. It usually doesn't kill the affected animals but affected animals can die by misadventure e.g. falling into water troughs. It is seen predominantly in summer and autumn.

Prevention and treatment

The toxin is present throughout the whole plant but tends to concentrate in the seed heads and in the base of the plant. Levels of toxin vary from plant to plant, season to season. It is quite difficult to prevent animals from becoming affected when they are grazing endophyte-infected pastures. Below are some options that may help reduce the effects of the toxins:

- Feeding a high quality supplement (silage, last season's hay, turnips, maize).
- Leaving higher post-grazing residuals.
- Pasture topping or mowing of seedheads. (Which may cause facial eczema spores to increase!).

In extreme cases, dairy cows may have to be dried off, and badly affected calves fed a lot of supplementary feed. Mycosorb from Alltech may be of some help in absorbing the toxin from the rumen. Laxatives have been used to get the toxins out of the system before getting absorbed.



Thiamine Deficiency in Calves

Every year we see a few calves affected with thiamine deficiency (Vitamin B1) which causes brain damage. The disease is also called polioencephalomalacia. A good name to remember. Thiamine or Vitamin B1 is made by the bugs in the rumen and the calves absorb what the bugs don't use. Vitamin B1 is used by all the cells in the body, but the neurons in the brain are highly sensitive to changes in its concentration. Normally only one or two calves in a mob are affected and if it is not treated within 24 to 48 hours of symptoms first being noticed, the affected calves die. The lack of thiamine leads to destruction of the calf's brain. Affected calves will initially "star gaze" or wander away from the main group aimlessly. If not treated, they will then become dull, lie down, begin to seizure, and slip into coma and die. Treatment, (if early in the disease), is successful, with the calf making a full recovery. The longer the treatment is delayed the poorer the chances of recovery.

Eczema, spring or facial?

Eczema is a disease that will show itself in a number of different ways. The symptoms are a result of damage done to the bile ducts and the liver. Cows can suddenly sit down, jump up and kick at their abdomen, swishing her tail and stretch out her body trying to relieve the pain in the gut. Both spring and facial eczema will affect the gut, causing acute pain, and also the skin, causing thickening of the white parts and the eventual crusting and scarring. Sometimes the affected animals want shade. Blood test for liver damage can be positive. Spring eczema occurs earlier in the season (August to December) and the cause is not always clear, it could be some weeds or something in the grass. It usually affects only one or two animals in a mob. Facial eczema occurs later in the season (January onwards) and is caused by a particular fungus on the grass. It can affect a large proportion of the herd. The treatment for both diseases is symptomatic, (antihistamines and painkillers) and prevention of the uptake of the toxins. The main preventative of Facial eczema is Zinc. This will protect the liver against the spore toxins if started 3 weeks before the spores are at critical level. Most cows recover and come back in full production, but sometimes they get crook and can eventually die.

It only remains for all of us at JBVisserVets to wish you a safe and joyous Christmas and a happy and healthy New Year.

We will be available over the Christmas/New Year period on 0800 847 737





ROACH'S

1000's ROSES to choose from
FRUIT, CITRUS &
ORNAMENTAL TREES
VEGIE & FLOWER PUNNETS

3 for \$9.00

HEDGING PLANTS
MUSHROOM COMPOST

BAG & BULK (weed free)

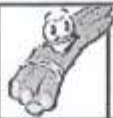
SCHOLLUM RD

Ph 824 1725

GENUINE
FREE RANGE
EGGS
\$6.50 per doz

OPEN
Monday-
Saturday
9 - 4pm

EFTPOS
AVAILABLE



Robert Macey Asparagus Ltd

16576 Schollum Road Eureka

Hours

Tuesday- Friday 9am - 5pm
Saturday- Sunday 9am - 4pm

Local Produce Grown Here in

Eureka

Fresh Asparagus For Sale

Purple or Green

\$4.00 for 500g

\$7.00 for 1 Kilo

Phone: 824 1998

Cell Phone: 0272929571

E-mail: arem48@xtra.co.nz

Do
business
locally
and
keep
locals
in
business

THE BEAUTY HOUSE

Personalised, friendly service

Tauwhare Village, 1092b Tauwhare Road

Ph: 8240950 or 0274 853985 Email: thebeautyhouse@xtra.co.nz



DERMATECH, OASIS & SKIN DEEP - 40 min FACIALS ALL \$40

EYELASH PERMING - Perm & Lash tint ONLY \$30!!!

OASIS BEAUTY SKINCARE - SUMMER IS HERE!!

SUNFX SPRAY TANS ONLY \$30 Or bring a friend and you both pay only \$25!! - This is a very natural looking tan that contains only salt, water and sugar. No alcohol or perfumes.

BELLA VI MINERAL COSMETICS - Spend \$100 or more in Dec/Jan and receive either a lash or brow tint. (Value \$15)

Oasis SPF30 - is a great family sunscreen without the nasty chemicals. Paraben and PABA free, great for children with eczema and sensitive skin. Non greasy, non whitening, UVB/UVA protection and made in NZ! 250mls - \$39.90

Rhino Repair - another great natural & organic product to soothe tender skin and assist in the healing process. Very popular for eczema/dermatitis sufferers both young and old, this can be used on face and body, and is perfect also for nappy rash, cracked heels, sunburn, dry chapped skin and more! 100g - \$32.50 205g - \$65.00

CHRISTMAS GIFT VOUCHERS & A LOVELY SELECTION OF REASONABLY PRICED PRODUCTS TO GIVE TO YOUR LOVED ONE - LET ME MAKE CHRISTMAS EASY FOR YOU!!

Jacqueline Jones, Beautician (CIBTAC, RCompN)

Eureka Precast Concrete

117 Hooper Road

**Manufacturer of the following
Farm and Small Block Concrete Products**

Palm Kernel Feeding Troughs

Feeding Pad Troughs

1,000 Litre Oblong Water Troughs

200 Litre Round Water Troughs

Offal Hole Lids

Septic Tank Replacement Lids

Plus Much More

Ph. Ian Manning – 0274 961902

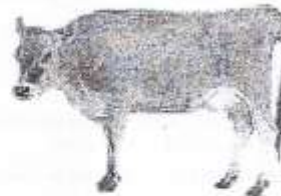
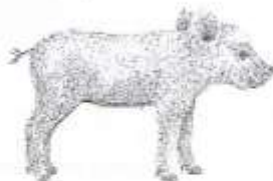
824 1988 a.h.

JBVisserVets

The team of **JBVisserVets** pride themselves on providing you top quality care for all large animals. Be it dairy, beef or lifestyle, your animals are in the best of care. Customer focused to the highest of quality, **JBVisserVets** look forward to meeting you today.

0800 VISSER

47 Lorne St Morrinsville / 161 Morrinsville Road Newstead



**JBVISSER
VETS**
07 889 0414

INNOVATIVE



870 SH 26 Newstead
 Brent 0272 432 011
 mcfarlanes@farmside.co.nz

Ph 824 1186
 Brent 0272 432 011

- Hay / Haylage—round, square, conventional
- Grass & Maize Silage
- Full ground cultivation
- Maize and Crop Planting
- Land lease & Share Cropping
- Spraying
- Truck & Trailer Hire
- Digger
- Metal injected sub-soil irrigation



"Helping farmers feed their cows"



Ctas NZ Ltd

www.ctas.co.nz



Specialists in:

- Professional systems online and PC development
- Online Internet based and PC/Lan Systems development
- Business Websites – FREE development (conditions apply)
 Check out <http://ctas.co.nz/Webs/Home.aspx> to see more.
- Alert-Me - Online TXT and Email reminder system. Ideal for everything, from birthdays, appointments, sporting, gardening, TAX, WOF, Registration and many more. One off or recurring. Free for home use. Go to www.Alert-Me.co.nz
- YouTXT – Operate your own TXT shortcode using our TXT system for free. Go to www.youtxt.co.nz
- FlightCheck – Check your flight details, real time from your Mobile Phone. TXT Flight number to 8808. Txt's cost 50c

Phone: 07 824 1025
 Email: grant@ctas.co.nz










Newstead Veterinary Services
 161 Morrinsville Rd (SH26)
 Phone (07) 856-4522 Fax (07) 8569487
 email: admin@newsteadvets.co.nz
www.newsteadvets.co.nz

We offer a comprehensive range of services for dogs, cats and small pets.

- Puppy pre-school classes
- Comprehensive range of pet care products and pet food
- Nutritional advice with onsite pet dietician and free weight clinic
- Cremation with a local pet crematorium, with optional return of ashes
- Isolation ward
- NZVA Microchipping Accredited Practice
- MAF Accredited vets for pet export certificates to Australia
- Ample parking

We believe that pets are important members of your family.

SPYVES PANEL SHOP
for all
Panel and paint requirements



**AUTOROBOT CHASSIS
and
ALIGNMENT MACHINE**

Ph Ron or Karen 8241 890
Fax 8241 892
Mob 027 280 0346

ROSS PUMPS

&
Filtration Specialists Ltd



Servicing and installation
On all types of pumps
Full Water Treatment
Service Available

DAREN ROSS

Tel. 8241 726 or 0274 346 571
Fax. 8241 879
Email: rosspumps@xtra.co.nz

**COMPUTERISED
BULK SPREADERS LTD**

For all your spreading needs



FERTILIZER, LIME, UREA

**Top Service,
Competitive Rates**

**Roger Springett
103 Hooper Road Eureka
Ph. 8241 175
Mob. 0274 970 413**

**EUREKA
POULTRY FARM**

13 Hooper Road
Ph 824 1762

**NIC & MARIA STOLWYK
Hobby Hens**



Young pullets from
5 weeks to point-of-lay
Great for lifestylers
Bagged up chook manure
Hours Mon-Sat 8-6

Green Acres

Professional lawn and
Garden care service



Maurice Smith

For free no-obligation quote:
Ph: (07) 824 1948
Mobile: 0274 797 282
Fax: (07) 824 1947
Email: msmith@clear.net.nz
Ride-on mowing specialists
Give your lawn the perfect finish

**IAN MANNING
REGISTERED DRAINLAYER**



**For all drainlaying work
New or alterations
Residential & Commercial
Blocked drains cleared
Maintenance
Prompt service**

**Tel. 8241 988
Fax. 8241 989
Mob. 0274 961 902**

**Kelvin Lalich
Builders Ltd**

- New homes
- Alterations
- Large & Small
Commercial Buildings
- Chicken Sheds

Phone 889 3951 (bus)
889 3975 (a/hrs)



**"Building
with Pride"**

**FRESH
APPLES & PEARS
STONEFRUIT IN SEASON**



**NEWSTEAD ORCHARD
552 Morrinsville Road**

OPEN MON-SAT.
W J McMiken & Co
Morrinsville Road
Tel. 856 4478

**TAUWHARE
HOME KILLS LTD**



**Tauwhare Village
Owner Operators
Trevor & Leonie Brunton**

**On Farm Killing Service
All beef hung for 7 days
FREE OFFAL DISPOSAL**

**Ph 824 0880 all hours
Fax 824 0809
Mob 0274 757 315**



Gayle Orr

Spiritual Counsellor & Teacher
Working with angels to relay
Messages from loved ones
Personal Readings
Healing
Spiritual Counselling
Meditation & Relaxation Classes

For a personal reading
phone: 07 824 1713

ACE OF SPADES

Landscaping



Your outdoor living specialist
All aspects of landscaping
And garden services

FREE QUOTES

Call Cameron Barr
m. 021 303 053
Ah. 824 1059

CALF COVERS

"Canvas, Jute, or satin
lined for Calf Club"

I also manufacture horse covers, trailer covers or any other kind of cover you may want. Good quality, P.V.C. horse gear bags — can also be used for dive bags. Good quality at reasonable prices.

Phone Narelle Pollock
824 0736



Also

- ✓ Upholstery Cleaning and Protection
- ✓ Flood Restoration
- ✓ Stain Treatment
- ✓ Auto and Marine Work
- ✓ Window Cleaning
- ✓ Senior Citizens Rates

Phone Grant on 0275 542 116
Or 07 823 7031
Locally Owned and Operated

Local builder
Tauwhare Road resident
Registered Tradesman



Concrete work
New homes
Renovations
Alterations
Farm buildings
Decks
Fences
Bathrooms
Kitchens
Roofing

Over 29 years building experience
No job too big or too small

Craig Griffin Builders Limited
Phone Mobile: 027 279 2682
Phone/Fax After Hours: 824 1607
Email: craigandjackiegriffin@ihug.co.nz

nzgarden sheds
The best little sheds around!

Your local garden shed supplier of
NZ made, self assemble Garden Sheds
(Zincalume or Colour Steel)

GET IN TOUCH...

- * EASY ASSEMBLY
- * MADE TO LAST!

Waikato Shed Company

218 Hunter Road, Eureka,
Hamilton

Phone: 07 824 1045

Email: sales@nzcgardensheds.co.nz

EQUIRE FOR A BROCHURE NOW

Trusler Contract Lawn Mowing

Fast, efficient, reliable



Free, no-obligation quote and
advice

Lex Trusler
Ph: 824 1906 Mob: 027 221 0861
Fax: 824 1907

Lifestyle blocks—sections
Road verges—horse studs
20 yrs + experience

Scanlan & Jones

Specialists in:

- ✓ Wood Fire Sales
- ✓ Wood Fire Installation/Repairs
- ✓ Hearth Manufacturers
- ✓ Outdoor Fire Installations
- ✓ Chimney Sweeping
- ✓ Heat Transfer Kits — Sales & Installation

Registered Installers
Over 17 Years Experience
Free Quotes



Contact Justin & Brendon
0274 834 267 (day)

A/Hrs: 07 824 0950 Fax 07 824 0951
Email: scanlan.jones@xtra.co.nz

Member of New Zealand
Heating Association



HAIRFIELDS

HAIR DESIGN

95 HOOPER ROAD

Sharon Laurent

Full salon facility in Eureka
Total hair care professional
with many years experience
Agent for Nutrimetics also



Open Tuesday to Friday
Late nights Tues/Thurs
Tel. 824 1712 or 027 280 5978



EUREKA MOTORS

COLIN DUNCAN (PROP). SH 26, OPPOSITE EUREKA HALL

WE ARE EQUIPPED AND SKILLED TO CARRY OUT ANY REPAIRS NEEDED ON ALL TYPES OF VEHICLES

Our experienced workshop staff guarantee to provide quality service to all our customers

If we don't have the right part in stock we'll get it for you straight away
If you need some work done, why not give us a try?

OPEN MONDAY - FRIDAY 7.30am - 6.00pm

SATURDAY 8.00am - Noon

Ph 8241 773 Fax 8241 073

WALLING CONTRACTING LTD **'YOUR PROVEN LOCAL ONE STOP CONTRACTORS'**

WE CAN OFFER YOU THE FOLLOWING SERVICES:



- *Grass Silage
- *Ploughing
- *Rotary Hoeing
- *Ripping
- *Undersowing
- *Baling & Wrapping
- *Digger (12 Ton)
- *Grass Crop Sales

- *Maize Silage
- *Power Harrowing
- *Discing
- *Maize Planting
- *Roller Drilling
- *Power Harrow/Seedbox
- *Shavings & Sawdust
- *Maize Crop Sales



**FOR ALL YOUR CONTRACTING NEEDS
PHONE LEN OR BECKY
ON**

824 0894 (anytime)

Farm & Lifestyle Block Sheds With More Useable Space, That Last Longer & Require Less Maintenance.

While from the outside some sheds may look the same, when you step inside one of our clear span steel sheds you will see that there are no unsightly web trusses or internal support poles taking up valuable space. You will appreciate that one of our custom designed steel sheds with a 50 year durability statement will actually cost you less over the buildings life & add value to your property.

We use materials that won't rot, twist or warp so you spend less time and money on repairs and maintenance. Factory applied finishes provide greater corrosion resistance and durability, with cladding & roofing available in a wide range of colours and profiles to suit every situation.



FREE, NO OBLIGATION DESIGN & QUOTE SERVICE

You don't pay a cent until you are completely happy with the design & ready to proceed



Our popular American Barns provide extra height in the centre section (ideal for boats or motorhomes) and are a great looking addition to lifestyle properties. The side modules can easily be divided off to be used as an office, rumpus room or accommodation unit.

Steel Is A Low Waste, Cost Effective Way To Build.

It makes sense financially to build a steel shed. Not only are steel buildings priced competitively, but the long lasting materials mean you spend less time and money on repairs and maintenance.

Sometimes little changes can have a big impact on price. Using our sophisticated design software, we can easily compare various shed designs and advise you on the most cost effective way to build your new shed. We think you'll agree that's pretty important.

The numerous advantages of building with steel combined with its superior strength means many consider steel to be the best building material for the job. Our steel frame buildings are some of the sturdiest & strongest around, which is the main reason for their popularity.

SITE SAFE



Freephone **0800 555 147**

218 Hunter Road, Eureka
www.waikatosheds.co.nz

**WAIKATO SHED
 COMPANY**

great sheds, done right!

Hamilton • Taupo

Looking For Affordable Housing For Your Farm Or Lifestyle Block?

Waikato Shed Company is proud to announce our new range of habitable buildings with the lifestyle and farmer in mind. Architecturally designed to make efficient use of the space, these one and two bedroom units are comfortable, affordable & modern. Ideal for temporary or long term accommodation.

Double glazed windows and a ranch slider provide plenty of natural light and give the units a spacious feel. Price includes septic, water tank, floor coverings and much more for a complete "turn key" package, making this a hassle free way to build.



Our 2 bedroom Raglan and Te Aroha designs provide a generous 70m² of living area. The Pirongia has 45m² of living area with one double bedroom. Any plan can be modified to suit your individual requirements, for example extra bedrooms. Call us for more information and full specifications.

"PIRONGIA"




**ONLY \$119,900 INCL GST
FULLY CONSTRUCTED**

"TE AROHA"

**ONLY \$149,900 INCL GST
FULLY CONSTRUCTED**

**2 BEDROOM "RAGLAN" ALSO
AVAILABLE FOR \$149,900 INCL GST**

FARM • INDUSTRIAL • LIFESTYLE



Please check with us for exact building dimensions & specifications. Prices and specifications are true and correct at time of printing. Variations to standard plans may incur extra cost. Price is based on site being within 50km of Hamilton and is subject to site visit.



Freephone **0800 555 147**
218 Hunter Road, Eureka
www.waikatosheds.co.nz

**WAIKATO SHED
COMPANY**
great sheds, done right!
Hamilton • Taupo